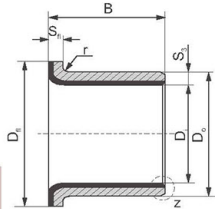
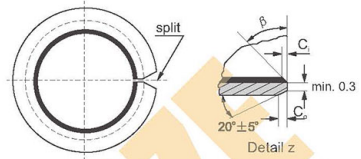


DU Flanged Bush, Standard Metric Sizes List



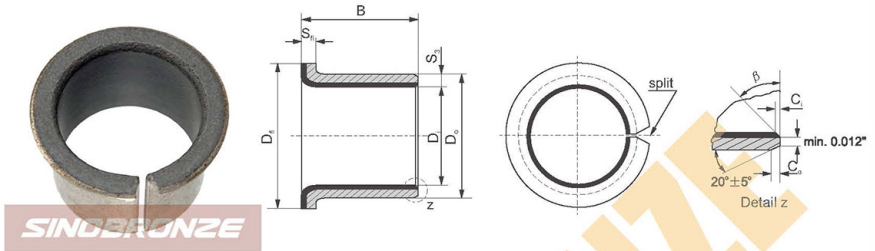
S _s	1.0	1.5	2.0	2.5
r	1 st	1±0.5	1.5±0.5	2±0.5



Unit:mm

Shaft D _s	Housing H _H	OD tolerance D _o	ID after fixing D _o *	Clearance C _o	Designation	Wall thickness S _s	Dimension					
							D _i	D _o	D _i ± 0.5	B± 0.25	S _s -0.2	
6 -0.013 -0.028	8 +0.015	8 +0.055 +0.025	6.055 5.990	0.077 0.000	BB0604DU	1.005 0.980	6	8	12	4	1	
					BB0607DU							7
8 -0.013 -0.028	10 +0.015	10 +0.055 +0.025	8.055 7.990	0.083 0.003	BB08055DU	1.005 0.980	8	10	15	5.5	1	
					BB08075DU							7.5
10 -0.016 -0.034	12 +0.018	12 +0.055 +0.025	10.058 9.990	0.086 0.003	BB1007DU	1.005 0.980	10	12	18	7	1	
					BB1009DU							9
					BB1012DU							12
					BB1207DU							7
12 -0.016 -0.034	14 +0.018	14 +0.065 +0.030	12.058 11.990	0.092 0.006	BB1209DU	1.005 0.980	12	14	20	9	1	
					BB1212DU							12
					BB1412DU							12
					BB1417DU							17
14 -0.016 -0.034	16 +0.018	16 +0.065 +0.030	14.058 13.990	0.092 0.006	BB1509DU	1.005 0.980	14	16	22	9	1	
					BB1512DU							12
15 -0.016 -0.034	17 +0.018	17 +0.065 +0.030	15.058 14.990	0.092 0.006	BB1517DU	1.005 0.980	15	17	23	17	1	
					BB1612DU							12
16 -0.016 -0.034	18 +0.018	18 +0.065 +0.030	16.058 15.990	0.092 0.006	BB1617DU	1.005 0.980	16	18	24	17	1	
					BB1812DU							12
18 -0.016 -0.034	20 +0.021	20 +0.075 +0.035	18.061 17.990	0.095 0.006	BB1817DU	1.005 0.980	18	20	26	17	1	
					BB1820DU							20
20 -0.020 -0.041	23 +0.021	23 +0.075 +0.035	20.071 19.990	0.112 0.010	BB20115DU	1.505 1.475	20	23	30	11.5	1.5	
					BB20165DU							16.5
					BB20215DU							21.5
22 -0.020 -0.041	25 +0.021	25 +0.075 +0.035	22.071 21.990	0.112 0.010	BB2215DU	1.505 1.475	22	25	32	15	1.5	
					BB2220DU							20
25 -0.020 -0.041	28 +0.021	28 +0.075 +0.035	25.071 24.990	0.112 0.010	BB25115DU	1.505 1.475	25	28	35	11.5	1.5	
					BB25165DU							16.5
30 -0.025 -0.050	34 +0.025	34 +0.075 +0.035	30.085 29.990	0.126 0.010	BB3016DU	2.005 1.970	30	34	42	16	2	
					BB3026DU							26
35 -0.025 -0.050	39 +0.025	39 +0.085 +0.045	35.085 34.990	0.135 0.015	BB3516DU	2.005 1.970	35	39	47	16	2	
					BB3526DU							26
40 -0.025 -0.050	44 +0.025	44 +0.085 +0.045	40.085 39.990	0.135 0.015	BB4026DU	2.005 1.970	40	44	53	26	2	
					BB4040DU							40

DU Flanged Bush, Standard Inch Sizes List



Unit: inch*

Shaft D _s	Housing H7 D _h	ID after fixed D _{0a}	Clearance C ₀	Nominal Flange D _f	Flange Thickness S _f	Length ± 0.010			
						06FDU04	06FDU06	06FDU08	06FDU12
0.3750 0.3740	0.4691 0.4684	0.3779 0.3752	0.0039 0.0002	0.7075 0.6675	0.052 0.044				
0.5000 0.4990	0.5941 0.5934	0.5029 0.5002	0.0039 0.0002	0.8325 0.7925	0.052 0.044	08FDU04	08FDU06	08FDU08	08FDU12
0.6250 0.6240	0.7192 0.7184	0.6280 0.6252	0.0040 0.0002	0.9575 0.9175	0.052 0.044	10FDU06	10FDU08	10FDU10	10FDU12
0.7500 0.7488	0.8755 0.8747	0.7534 0.7502	0.0046 0.0002	1.1450 1.1050	0.068 0.060	12FDU06	12FDU08	12FDU12	12FDU16
0.8750 0.8738	1.0005 0.9997	0.8784 0.8752	0.0046 0.0002	1.2200 1.1800	0.068 0.060	14FDU08	14FDU12	14FDU16	14FDU20
1.0000 0.9988	1.1255 1.1247	1.0034 1.0002	0.0046 0.0002	1.3950 1.3550	0.068 0.060	16FDU08	16FDU12	16FDU16	16FDU20
1.2500 1.2484	1.4068 1.4058	1.2540 1.2502	0.0056 0.0002	1.7700 1.7300	0.083 0.075	20FDU16	20FDU20	20FDU24	
1.5000 1.4984	1.6568 1.6558	1.5040 1.5002	0.0056 0.0002	2.0200 1.9800	0.083 0.075	24FDU16	24FDU24	24FDU32	
1.7500 1.7484	1.9381 1.9371	1.7548 1.7502	0.0064 0.0002	2.3950 2.3550	0.098 0.090	28FDU16	28FDU24	28FDU32	